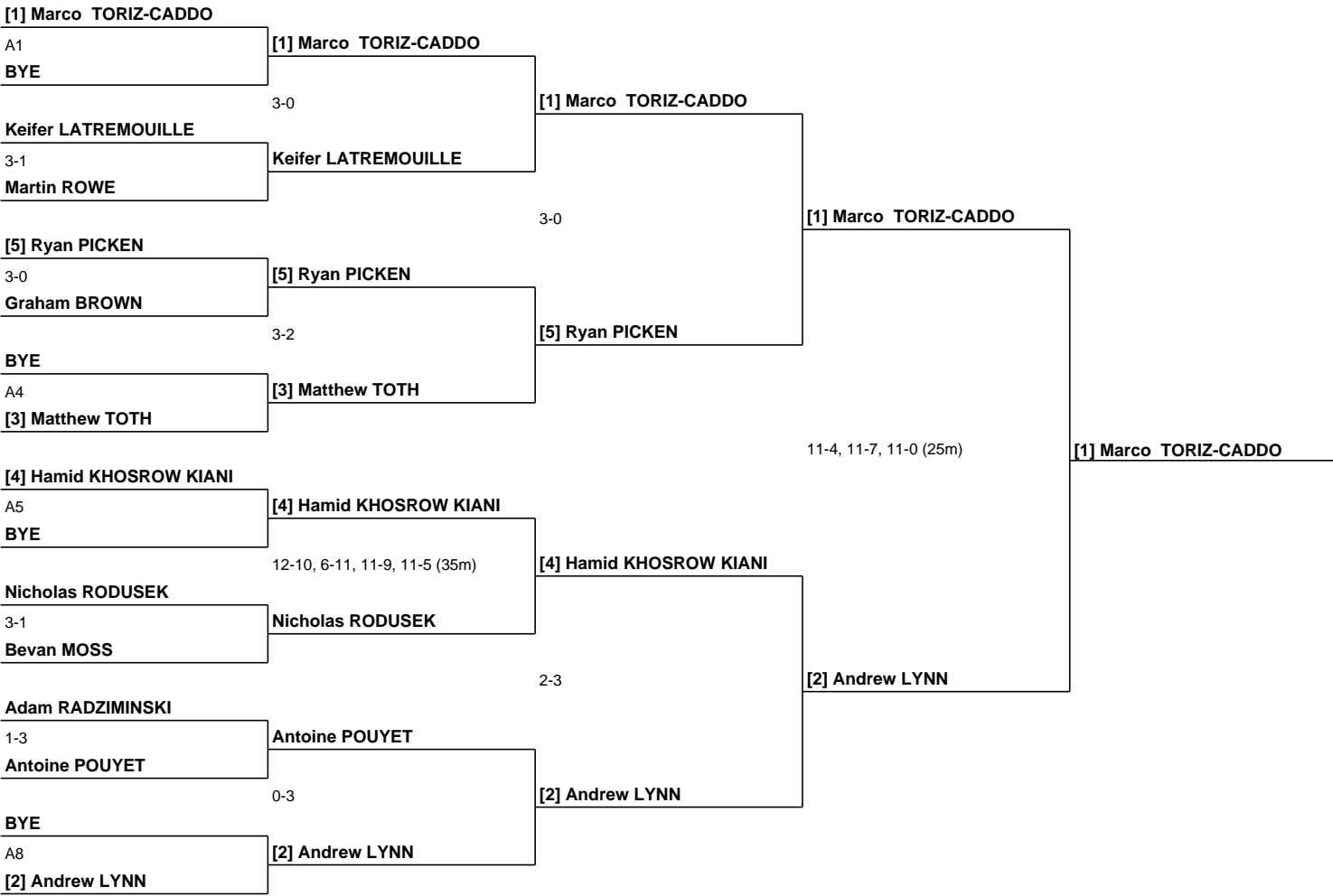


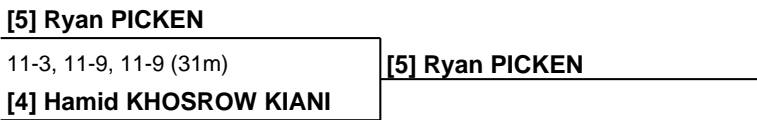
2016 PCO Squash Champs

Mens Open

Bracket 1



Playoff 3-4



Bracket 2

Keifer LATREMOUILLE

12-10, 9-11, 11-8, 10-12, 6-11 (47m)

Nicholas RODUSEK

Nicholas RODUSEK

3-0

Nicholas RODUSEK

Martin ROWE

10-12, 5-11, 8-11 (26m)

Bevan MOSS

Bevan MOSS

8-11, 2-11, 2-11 (18m)

[3] Matthew TOTH

Graham BROWN

2-3

Adam RADZIMINSKI

Adam RADZIMINSKI

0-3

[3] Matthew TOTH

[3] Matthew TOTH

3-0

Antoine POUYET

[3] Matthew TOTH